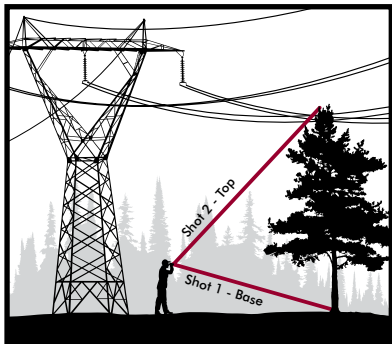


# Danger Tree Clearance Routine

1. Position yourself with a clear line of sight to the base and top of the tree, and to the spot on the conductor that is closest to the tree.\*

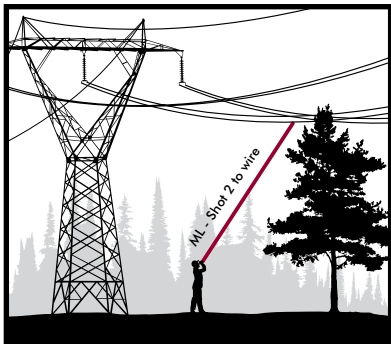
2. Toggle the TruPulse 360° into the Missing Line (ML) mode and take Shot 1 to the base of the tree and Shot 2 to the top.



\*If you can't see all 3 points from one location or you have a TruPulse 200 model, measure the height of the tree from one spot and then start the ML routine over again to get the distance to the wire in steps 4 and 5. Follow the proper procedure for obtaining accurate ML - SD values with your instrument.

(See reverse side for next step)

3. Press the Down Arrow twice and make note of the ML – SD Value. This is the height of the tree.



4. Press the Up Arrow 3 times and take Shot 2 to the point on the wire closest to the tree.

5. Press the Down Arrow twice and make note of the ML – SD Value. This is the distance from the base of the tree to the wire.

If the distance to the wire value is less than the height of the tree, it will hit the conductor.

If the distance to the wire value is greater than the height of the tree, it is within a safe distance from the conductor.